

1912 MILL



SUNNY BANK MILLS
FARSLEY LEEDS LS28 5UJ

TO LET Modern Offices 2,950 - 20,000 sq.ft
CREATIVE SPACE FOR BUSINESS

www.sunnybankmills.co.uk

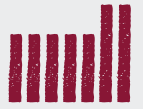
1912 MILL



1912 MILL

2,950 - 20,000 *sq.ft*

To Let



SUNNY BANK MILLS

CREATIVE SPACE FOR BUSINESS

LS28 5UJ

Exceptional historic mill premises converted to provide high quality office accommodation.

Specification

Suites can be developed to meet the specific requirements of an occupier. They provide the following base specification:

- **Open plan accommodation**
- **Modern compliant lighting**
- **Comfort cooling**
- **High capacity wideband telephony**
- **Onsite parking provision in impressive courtyard**
- **High levels of natural light**
- **Historic features**
- **Feature lighting to exterior**
- **Impressive reception area**
- **Passenger lift to all floors**
- **Modern WC facilities to all floors**
- **Fantastic views**

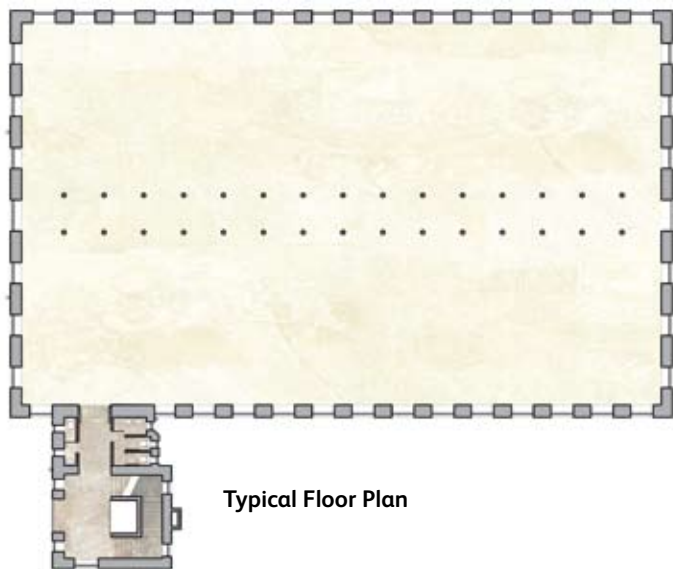
Accommodation

	sq.m	sq.ft
Ground Floor	LET	LET
First Floor	808	8,700
Second Floor	275	2,950
Third Floor	808	8,700

*Potential exists for further sub-division as necessary

Terms

The units are available on new internal, full repairing and insuring terms on terms to be agreed.



Typical Floor Plan



Viewing/Further Information

**DOVE HAIGH
PHILLIPS**

0113 245 0550

www.dhp.org.uk

mark.nicholson@dhp.org.uk
mike.haigh@dhp.org.uk



**JONES LANG
LASALLE**

0113 244 6440

joneslanglasalle.co.uk

Simon.Dove@eu.jll.com
Jeff.Pearey@eu.jll.com

MISREPRESENTATION ACT: Dove Haigh Phillips for themselves and for the vendors or lessors of this property, whose agents they are give notice that: a) all particulars are set out as general outline only for the guidance of intending purchasers or lessees, and do not comprise part of an offer or contract; b) all descriptions, dimensions, references to condition and necessary permissions for use and occupation, and other details are given in good faith and are believed to be correct but any intending purchasers or tenants should not rely on them as statements or representations of fact but must satisfy themselves by inspection or otherwise as to the correctness of each of them; c) no person in the employment of Dove Haigh Phillips has any authority to make any representation of warranty whatsoever in relation to this property. **Design and Production DSE.MOTION www.dsemotion.com. September 2011. (DS8629)**